

N 49° 42' 27" W  
364.10'

14  
1.8 AC.

N 39° 57' 42" W  
300'

13  
1.9 AC.

57° 42' W  
970'

DEER HAVEN

HAVEN

11  
3.7 AC.

12  
2.4 AC.

N 84° 55' 52" W  
160'

N 2° 35' 27" W  
306.24'

N 30° 46' 10" W  
576'

N 37° 21' 50" W  
496.94'

N 47° 33' 50" E  
2.62 chs.

N 14° 46' E  
132.2 chs.

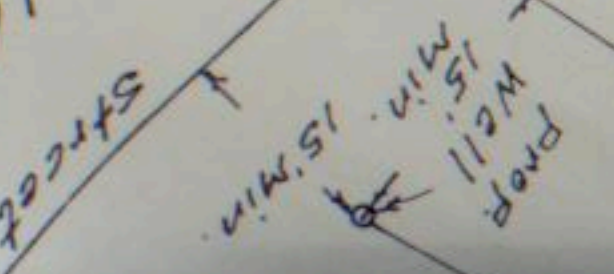
Acres (d)

Exception 963.0'

C. Gopher  
260 - 262  
5 ± Acres

793.98'  
12.3 chs.

TYPICAL



I certify that the  
rate was derived from  
percolation tests with  
Bullington I and satisfy  
facilities and satisfy  
G. Gopher  
NYS License No.

5	6	15	159
0.6	GAL.	159	...