

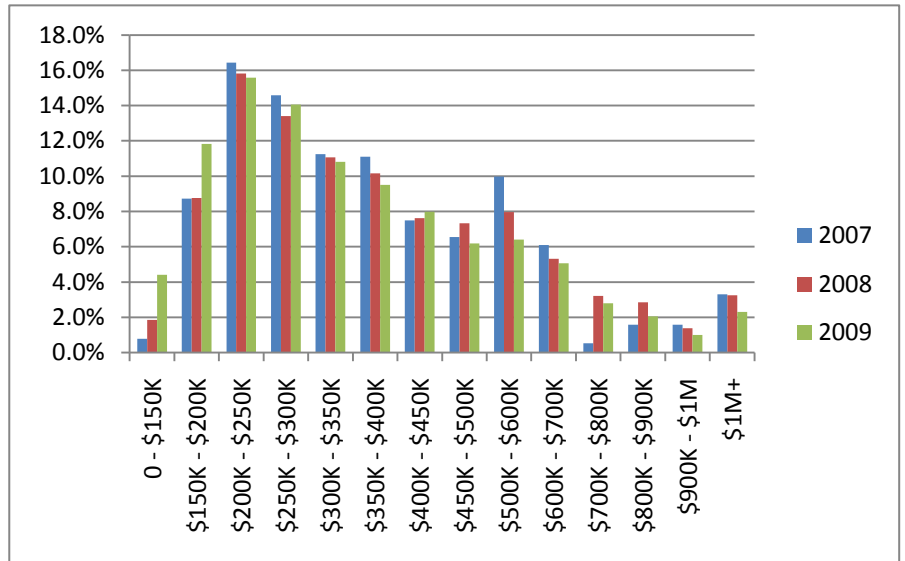
Sales by Price Range

Conclusion: There was a significant increase in the very low priced homes in 2009. I believe this was due to the 1st Time Buyer Tax Credit. If you want to sell a home in this price range, your window of opportunity is between now and 4/30/2009!

Roswell and Alpharetta

Expressed as a %

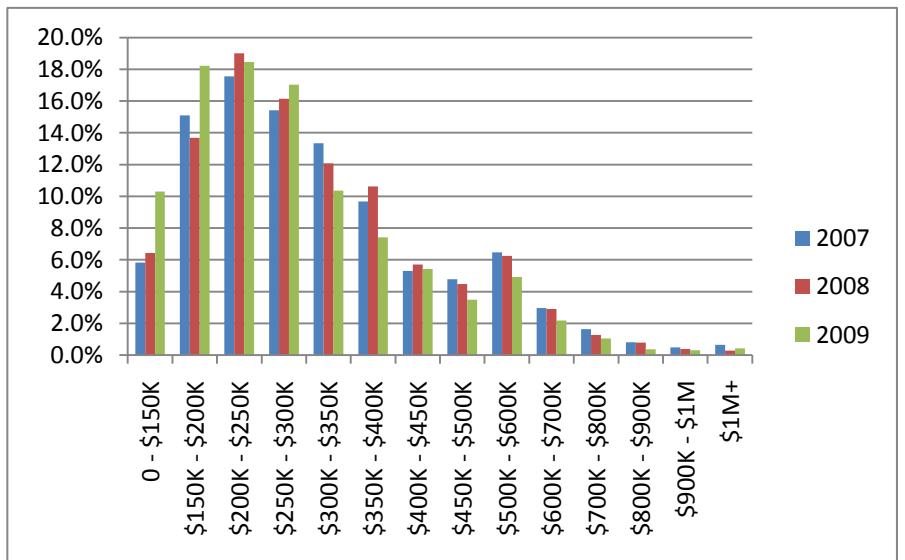
	2007	2008	2009
0 - \$150K	0.8%	1.9%	4.4%
\$150K - \$200K	8.7%	8.8%	11.8%
\$200K - \$250K	16.4%	15.8%	15.6%
\$250K - \$300K	14.6%	13.4%	14.0%
\$300K - \$350K	11.2%	11.1%	10.8%
\$350K - \$400K	11.1%	10.2%	9.5%
\$400K - \$450K	7.5%	7.6%	8.0%
\$450K - \$500K	6.6%	7.3%	6.2%
\$500K - \$600K	10.0%	8.0%	6.4%
\$600K - \$700K	6.1%	5.3%	5.1%
\$700K - \$800K	0.5%	3.2%	2.8%
\$800K - \$900K	1.6%	2.9%	2.1%
\$900K - \$1M	1.6%	1.4%	1.0%
\$1M+	3.3%	3.3%	2.3%
Total	100.0%	100.0%	100.0%



Cumming

Expressed as a %

	2007	2008	2009
0 - \$150K	5.8%	6.4%	10.3%
\$150K - \$200K	15.1%	13.7%	18.2%
\$200K - \$250K	17.6%	19.0%	18.5%
\$250K - \$300K	15.4%	16.1%	17.0%
\$300K - \$350K	13.3%	12.1%	10.4%
\$350K - \$400K	9.7%	10.6%	7.4%
\$400K - \$450K	5.3%	5.7%	5.4%
\$450K - \$500K	4.8%	4.5%	3.5%
\$500K - \$600K	6.5%	6.3%	4.9%
\$600K - \$700K	3.0%	2.9%	2.2%
\$700K - \$800K	1.6%	1.3%	1.1%
\$800K - \$900K	0.8%	0.8%	0.4%
\$900K - \$1M	0.5%	0.4%	0.3%
\$1M+	0.6%	0.3%	0.4%
Total	100.0%	100.0%	100.0%



	2007	2008	2009
0 - \$150,000	27	47	101
\$150,000 - \$200,000	298	221	271
\$200,000 - \$250,000	561	399	357
\$250,000 - \$300,000	498	338	322
\$300,000 - \$350,000	384	279	248
\$350,000 - \$400,000	379	256	218
\$400,000 - \$450,000	256	192	183
\$450,000 - \$500,000	224	185	142
\$500,000 - \$600,000	341	201	147
\$600,000 - \$700,000	208	134	116
\$700,000 - \$800,000	18	81	64
\$800,000 - \$900,000	54	72	47
\$900,000 - \$1,000,000	54	35	23
\$1,000,000+	113	82	53
Total	3415	2522	2292

	2007	2008	2009
0 - \$150,000	145	115	165
\$150,000 - \$200,000	376	245	292
\$200,000 - \$250,000	437	340	296
\$250,000 - \$300,000	384	289	273
\$300,000 - \$350,000	332	216	166
\$350,000 - \$400,000	241	190	119
\$400,000 - \$450,000	132	102	87
\$450,000 - \$500,000	119	80	56
\$500,000 - \$600,000	161	112	79
\$600,000 - \$700,000	74	52	35
\$700,000 - \$800,000	41	23	17
\$800,000 - \$900,000	20	14	6
\$900,000 - \$1,000,000	12	7	5
\$1,000,000+	16	5	7
Total	2490	1790	1603